

TABELLA

Interactive Intelligent Panel



FLOATING
POINT

Product Information



TABELLA

Interactive Intelligent Panel

UHD 4K Resolution Model: L55EB, L65EB, L70EB, L75EB, L86EB

Resolution	55"	65"	70"	75"	86"
UHD 4K	•	•	•	•	•





AG Glass

AG tempered glass 4mm Mohs level 7: anti-scratch surface, no margin round design, no toxic matellic-ion agent coating is applied, more safe and secure. Insensitive to incident sunlight, adjust brightness automatically at a comfortable mode on Android source, save energy and protect your eyesight. Low blue light adjustment setup on PC OS source. The effective anti-collision touch screen allows you clean all the dirt and bacteria on the surface frequently.

High Accurate Touch Experience

Support up to 10 accurate writing points and 20 simultaneous points multi-touch. Writing, annotating and screenshots at any channel. Creating accurate and smooth touch, writing experience.



Ultra-thin Design

Ultra-thin design & ultra-narrow appearance. Front physical buttons, easy to turn on/off, set up, switch. Front USB interface, anti-collision, accessible to PC, Android sources.

Multi OS + Multi Module

Built-in high performance Android module. Pluggable PC module is selectable and detachable Wi-Fi module. Whiteboard and multimedia playback could be realized at any OS system.

(OS not included with PC module)



Video Conference



Video Conference Software

- Various video conference software supported
- Desktop and whiteboard content sharing



TABELLA is compatible with a variety of remote conference hardware and office applications software.



Wireless Screenshare

TABELLA

Software Solution



Hardware Solution



Hardware solution for guest

- No extra software required
- Single Press for connection
- Transmits with video, audio and touch signals

Smart Conference All-in-one Solution

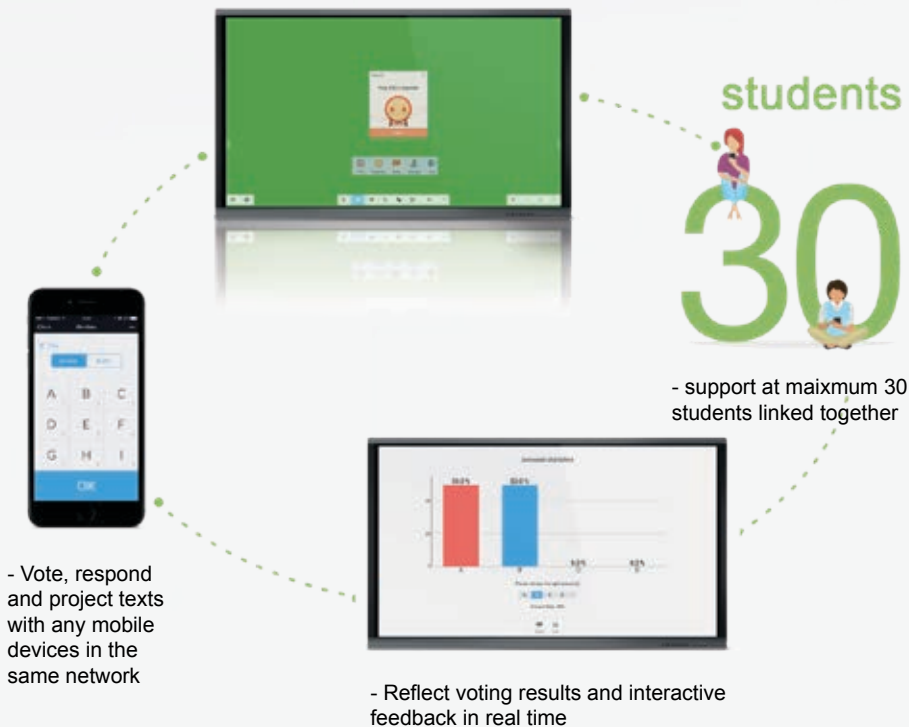
- * 4K Ultra HD crystal-clear display
- * Digital whiteboard and cloud storage
- * Wireless screen presentation

Model: SM04
Wireless Screen Share



Floating Side Bar Widgets

- Annotation tools at all the sources
- Rich tools available in any source, including timer, counter, spot light and etc



Interactive Class

Android White Board Software

Palette Board - Multiple brushes and color mixer for imaginative creation

Multiple templates and teaching materials based on different subject

Google Drive and OneDrive supported on cloud storage



Windows based education software



Note3 - Education Whiteboard Software

Note is a touchscreen-based interactive whiteboard software designed for education. This software works with IWB/IFP (Interactive Flat Panel) and provides whiteboard functions like writing, erasing, annotating, drawing, and roaming. Moreover, superior interactive teaching and demonstration experience are achieved based on the interactive multimedia function of the flat panel, such as subject-specific tools and multimedia playback.



Connect - Connecting Mobile Devices and Interactive

This software creates a Wi-Fi-based system for implementing interaction between mobile terminal and IFP. With the system, you can connect the IFP to a mobile terminal, take a picture and present it on the IFP, operate the IFP via the mobile terminal, add comments, present courseware and transmit files.



Capture - Making Micro lecture

This software applies to the recording of teaching materials. Teachers can make screen recording, edit and prepare lessons in an easy and efficient way.



Remote - Devices Remote Management

The software is designed for united management of Interactive Flat Panel in the campus. Through the system, school can have cluster management function of their Interactive Flat Panels including panel grouping, status monitoring, time & channel switching, volume controlling and information broadcasting.



Broadcast - Multimedia Broadcast

With the broadcast system, teachers and principals can make live broadcast easily from their office. The software helps to share the real-time audio and video throughout the campus.



Highly personalized expressive and interactive experiences



TABELLA works perfectly with latest interactive software tools



Your concept becomes an interactive reality





MT21

4K PC Module (OS not included)

Intel 6th Skylake CPU

Intel®Core™ i3/i5/i7 optional

Pin Connector: 120pin

4K 2K/60Hz output

Chipset: Intel H110 Express

Integrated HD Graphics

6xUSB 3.0 + HDMI/VGA/Display Port Out



SI01

Dual Band Wi-Fi Module

Detachable USB port

Dual wifi bandwidth: 2.4GHz 15GHz

Bluetooth 4.0: one to one pair to transfer files and data

New generation 11ac: up to 433Mbps wireless transmission rate

Public hotspot setter: Get all your mobile devices online when the panel is connected to the Internet

A more stable network: Auto adjust the bandwidth in avoidance of channel interference



SC03

Visualizer

Efficient, Simple, Clear and Smooth

SC03 is a compact wall-mount visualizer designed for classroom to cooperate with IFP devices; it can capture images, movement, scan and annotate paper documents and other objects through the IFP screen

ST01

Mobile Stand

The height of the wall mount is adjustable.

Universal wheels with wheel brake design.



SP05

Smart Pen

SP05 integrates the functions of writing, slide playback and annotation during presentations.

It also isolates pen writing and hand/gesture control which is convenient for users



SL01

EasiCable

SL01 is one cable solution to sharing your PC/Mobile Device screen to Interactive Flat Panel via USB Port; It also provides reverse touch control of PC/Mobile Device through Interactive Flat Panel.

TABELLA Interactive Flat Panel					
Model	L55EB	L65EB	L70EB	L75EB	L86EB
Display					
Panel Size	55 inch	65inch	70 inch	75inch	86 inch
Aspect	16:9				
Display Area	1209.6mm*680.4mm	1428.48mm*803.52mm	1538.88mm*865.62mm	1649.664(H)*927.936(V)mm	1895.04(H)*1065.96(V)mm
Resolution	3840(H)*2160(V)				
Pixel Pitch	0.315mm*0.315mm	0.496mm*0.372mm	0.40075mm*0.40075mm	0.429mm*0.429mm	0.4935mm*0.4935mm
Back Light Unit	Direct type LED				
Response Time	9ms	8ms			
Refreshing Frequency	60Hz				
Display Color	1.07B (10bit)				
Brightness with glass(typ)	350cd/m2		330cd/m2		
Brightness with glass(min)	300cd/m2		270cd/m2	300cd/m2	
Contrast Ratio	1200:1		4000:1	1200:1	
Viewing Angle	178°		176°	178°	
Life Time	30000 Hours				
Video/Audio					
Speaker Type	Built-in Speaker				
Output Power	12W*2				
Connectors					
HDMI Out	1				
USB	USB2.0: 4 (including 2 USB ports in front) ； USB3.0: 2 (including 1 USB port in front)				
Touch Out	2				
HDMI In 2.0 In	HDMI 2.0: 1 ； HDMI 1.4: 2				
DP In	1				
VGA In	1				
Audio In	1				
AV In	1				
RS232 Control	1				
Audio Out	1				
LAN	1				
COAX Out	1				
Touch System					
Sensing Type	Infrared recognition				
System	Windows10/Windows8/Windows7/Windows/XP/Vista/Linux/Mac/Android/Wince/Chrome				
Touch point	10 points writing and 20 points touch				
Writing Response	single-touch ≥Φ6mm and multi-touch ≥Φ8mm				
Touch Tool	Finger, Finger cover by glove, Opaque objects				
Response Time	<15ms				<20ms
Accuracy	±2mm(over 90% Area)				
Communication Mode	Full-speed USB (driver free)				
Interface	USB2.0 type B				
Touch Drive	Free drive				
Surface Hardness	Toughened Glass with Level 7 of Mohs Standard				
Output Coordinate	32767*32767				
Android System					
System Version	Android 5.1				
CPU	ARM Cortex A53 Dual Core CPU				
GPU	Quad Core Mali 450MP				
RAM / (ROM)	2G / (16G)				
General					
Power Requirements	100-240V- 50/60Hz				
Standby Power	≤0.5W				
Overall Power(nominal power)	TBD	250W	TBD	400W	500W
Dimension L*H*D	1302*791*98mm	1521*915*98mm	1638*982*98mm	1762*1034*100mm	1988*1178*99.6mm
Dimension (package) L*W*H	1458*220*932mm	1697*220*1071mm	1803*243*1160mm	1913*1225*280mm	2211*280*1370mm
Net Weight	32kg	44kg	56kg	60kg	78kg
Gross Weight	40kg	55kg	68kg	78kg	105kg
Thickness of machine and wall mount	144mm (9060A)	144mm (9060A)	144mm (9060A)	146mm (9060A)	145.6mm (9060A)
Wall-hanging Screw Spec	M8*25mm				
VESA	400*400mm	600*400mm	600*400mm	800*400mm	800*600mm



Floating Point Company Limited

All rights reserved © 2018
III.XX.MMXVIII



contact@floatingpoint.com.hk



+852 9273 9364
+852 9385 7887
+852 5100 6293



Rm 616, 6/F, E-Tat Factory Building,
4 Heung Yip Road, Wong Chuk Hang,
Hong Kong



www.floatingpoint.com.hk

Features and specifications are subject to change without notice.